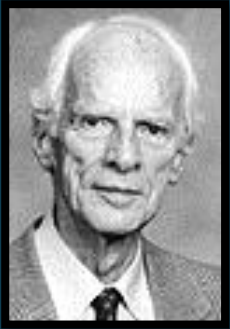


Bjarne W. Olesen
ASHRAE President 2017-18

EXTENDING OUR COMMUNITY



HOW DID I GET HERE?



- Meeting ASHRAE members at my University
- ASHRAE Handbooks
- Papers from Transactions



The Chronicle Herald Halifax

June 1977

Study for the comfort of bare feet 'down to earth'

By ELIZABETH SMITH

While some engineers may appear to be engrossed in lofty thoughts of new technological ideas, others are literally down to earth.

A study entitled, Thermal Comfort Requirements for Floors Occupied by People with Bare Feet has been completed by Dr. Bjarne Oleson, a research associate of the Technical University of Denmark and members of the American Society of Heating, Refrigerating and Air-Conditioning Engineers (ASHRAE) at their annual meeting in Halifax.

Dr. Oleson outlined the benefits of floor heating as being very economical and healthy. "The temperature in the room is distributed by radiation and is not be very high — also the air is more fresh."

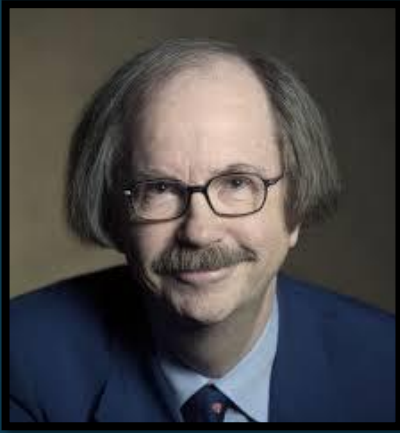
to keep people comfortable depends a lot on the floor material," Dr. Oleson said. "For instance floors covered with carpet or cork have a wide interval of between 21-29 Celsius, whereas stone or marble floors have only the smaller range of 27-29 Celsius."

resides on or building although it can also be complemented with a heating unit in the ceiling. Dr. Oleson warned, "Also the aided by reflectors and insulation. When heating is on the ground you should take care to heat difference."

insulate to prevent the heat from sinking down into the ground. "Also the coils should not be too far apart so that there won't be a greater heat difference."



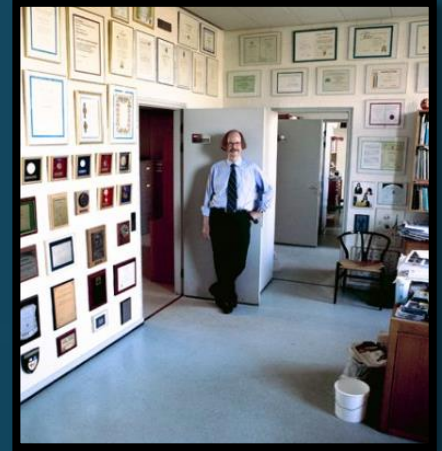
U-PICK
STRAWBERRY
INFORMATION
PHONE 424-3933
PHONE 424-3933



Prof. P.O. Fanger

1934-2006

- ASHRAE Hall of Fame
- 11 Honorable doctorates
- Member of the National Academy of Engineering (USA)



Dr. Per Brüel

1915 - 2015

- 9 Honorable doctorates
- Member of the National Academy of Engineering (USA)



ASHRAE

Strategic Plan

STARTING

2014

CONNECT

COMMITMENT

ADAPT

COLLABORATION

EXTEND



EXTEND

In 2014 we published a new strategic plan, which shall lead the direction of the society.

Extending Our Community

- Global community
- Technological horizon
- Value to Members



Extending Our Global Community



Extending Our Global Community



56,500+
members

130+
countries

11,000+
outside
N.A.

14
Regions

180+
Chapters

280+
Student
Chapters



Extending Our Global Community:

New European Region XIV

- Voted by the Board to start July 1, 2017
- 1,800 members
- 5 Chapters (Greece, Danube, Portugal, Spain, Cyprus)
- +New chapters in Ireland, UK-London, UK-Midland



Extending Our Global Community:

Memorandums of Understanding

- New Strategic Partnership agreement with CIBSE
- New trilateral agreement with REHVA and CIBSE
- New MOU with REHVA
- New MOU with AiCARR (in progress)
- Close collaboration with REHVA and CIBSE



Extending Our Global Community

- Members council is reviewing ASHRAE's regional structure
- Expand to new territory like Africa (new Chapter in South-Africa)
- ASHRAE Associate Society Alliance (AASA)
 - Created in 1962
 - 60+ member organizations
 - Change into "The Global Alliance for HVAC&R" or "United Nations of Building Technology" by ASHRAE
 - Organize first meeting outside North America in April 2018



Extending Our Global Community

Developing Economies

- 3,500 out of 56,500 ASHRAE members live in developing economies
- 3 billion people still cook and heat their homes using solid fuels (i.e. wood, crop wastes, charcoal, coal and dung) in open fires and leaky stoves.
- According to WHO, 4.3 million people die annually (i.e. 5.000 per day) from illnesses attributed to bad indoor air quality.



Extending Our Global Community:

Developing Economies



- What can ASHRAE do?
- Increased partnership with United Nations Environmental Program (UNEP)



Extending Our Global Community



- More global and diverse membership makes a stronger society
- Global exchange of technology
- Global exchange of information
- Global industry



Extending Our Technological Horizon

- Residential
- Developing economies
- Standardization



Extending Our Technology: Residential



We spend about 90 % of our time indoors (home, work, transportation, etc.)
50-60% of our time is spent at home.

More energy is used in residential than commercial buildings.

Extending Our Technology: Residential

- Residential Building Committee
- ASHRAE conference with residential emphasis
- Green Building guide
- Design guide for multi-family

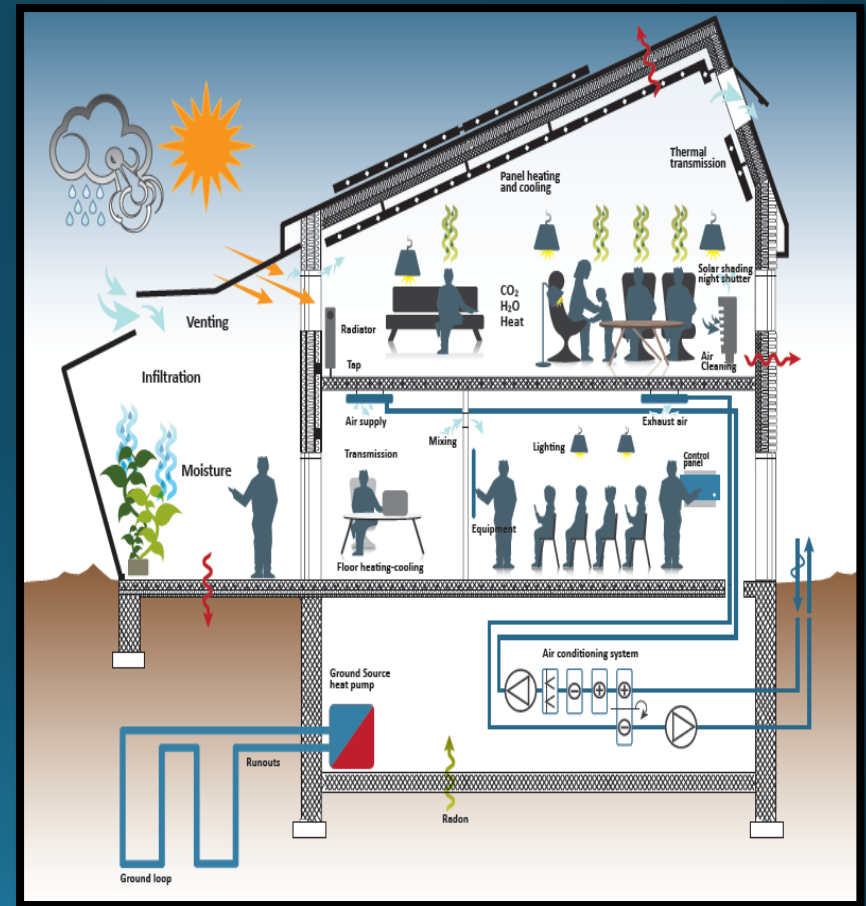


Extending Our Technology: Residential



Extending Our Technology: Residential

- Health-comfort
- Sleep quality
- Energy
- Occupant behavior
- Smart cities



Extending Our Technology: Developing Economies

- Rapid development of large urban environments
- Lower membership rates give greater access to ASHRAE's technologies
- First course on refrigerants and developing economies to be used by UNEP
- Conferences tailored to developing economies



Extending Our Technology: Standardization

- ISO International Standards Organization
- CEN European Standards Organization
- Adaption-Adoption of ASHRAE standards
- Presidential special (AdHoc) committee
- Global standards for Indoor Environmental Quality



Extending Our Value to Members



- Support to joint Chapter Regional Conferences
- Expand student member opportunities for innovation
- Connect chapters and student branches from different countries with each other.





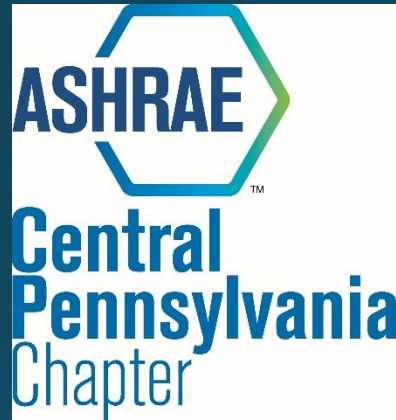
Extending Our Value to Members



(Credit: U.S. Department of Energy Solar Decathlon)

ASHRAE Student Design/Application Competition will focus on developing economies

Extending Our Value to Members



- Increase global exchange of knowledge with other countries



Extending Our Value to Members:

Dubai Training Center



The ASHRAE Global Training Center for Building Excellence, located in the Dubai Association Center, will serve ASHRAE members and other building system professionals in the Gulf Region and surrounding areas.

Open Sept. 19, 2017





Thought for the Day

April 19th

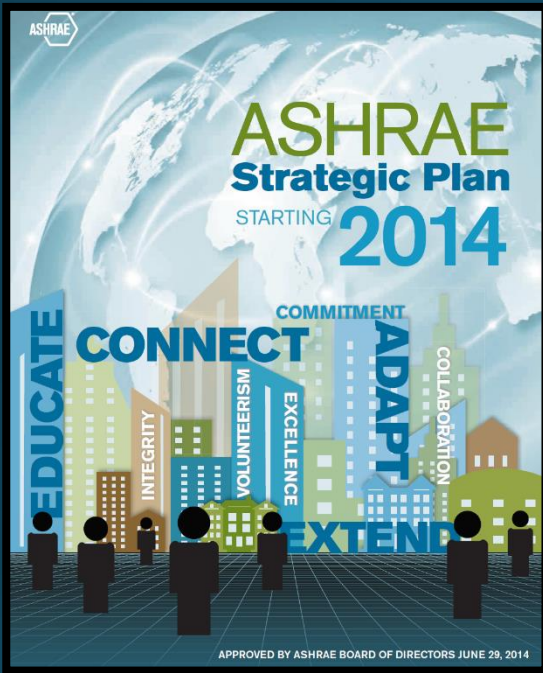


**"The smile is the shortest
distance between two
people."**

~ Victor Borge (1909 – 2000);
Danish comedian, conductor, pianist



Extending Our Community



- **EXTEND** our community by **ADAPTING** to new technologies and making global **CONNECTIONS**

